



PIONEER YURT ACCESS AND INFORMATION

Sun Valley Trekking

(7.5 min. map reference: Hyndman)

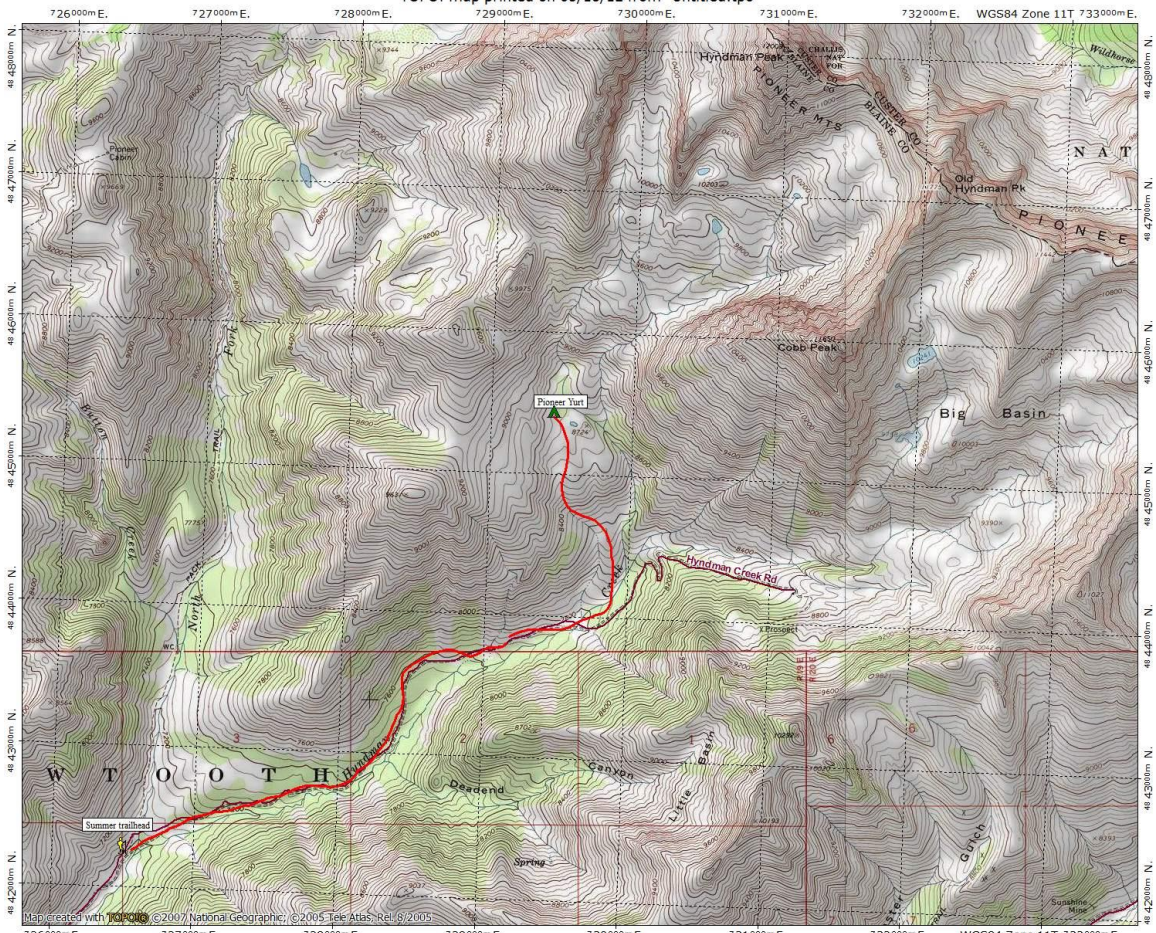
The Pioneer Yurt is a wonderful place to escape the village hustle and enjoy a unique get-away. The yurt has been purposefully sited in a remote and beautiful location to create an atmosphere of seclusion. If you have chosen to have a do-it-yourself yurt trip (i.e.: no guide) then you should be aware that you are truly on your own. Below, you will find driving and hiking directions to access the yurt in the summer and autumn seasons. While the trails to the yurt are well used, be sure you have a good topographic map handy when you are going to the yurt for the first time.

The closest water source is at the creek just east of the yurt. You will find big containers to carry water to the hut inside the yurt. You should bring your own water for the first day too. Inside the yurt you will find a "Renter Information" binder that will explain how to use the different facilities at the site. Please read this manual when you get to the yurt. Have a great trip!!!!

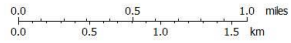
Driving Directions: *A high clearance vehicle is required*

- Drive south of Ketchum, or north of Hailey 6 miles on Hwy 75 to the East Fork traffic light
- Turn east on to East Fork Road
- Drive on East Fork Road for approximately 7 miles (you will past through the village of Triumph)
- Turn left on the Hyndman Creek Rd. (there is no sign, but it is the first road on the left past Triumph)
- Drive on Hyndman Creek Rd. for 4.7 miles to the summer trailhead. **PARK HERE!**
- Walk to the southeast of the parking lot and you will see a trail going down to Hyndman Creek.
- Follow this trail for approximately 2.5 miles. At the very beginning it will lead you slightly upstream to a bridge to cross on
- At 2.5 miles you will come to large open meadows, continue to follow the trail up the steep hill for 1 mile and another 1000' vertical feet.
- The yurt is tucked in on the western side of the meadows against the sage covered hills in a stand of old-growth trees.

Please check out the Access Map attached for a visual of these instructions.



Map created with ©2007 National Geographic, ©2005 Tele Atlas, Rel. 6/2005



13 1/2°
05/18/12